

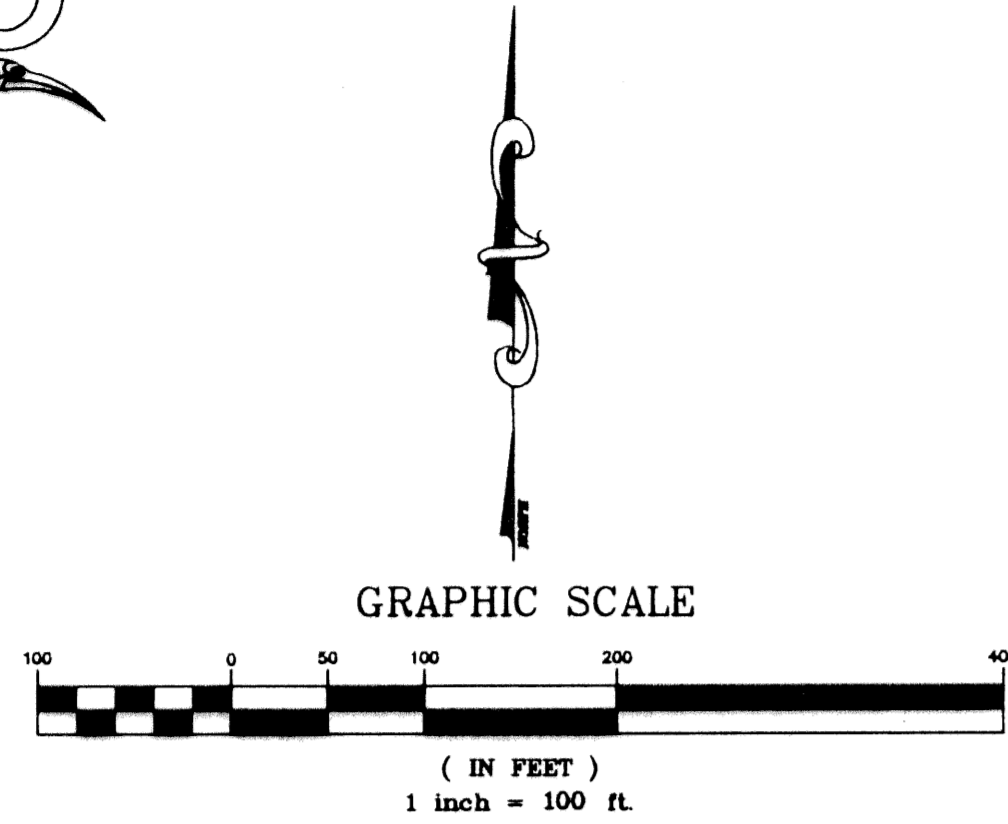
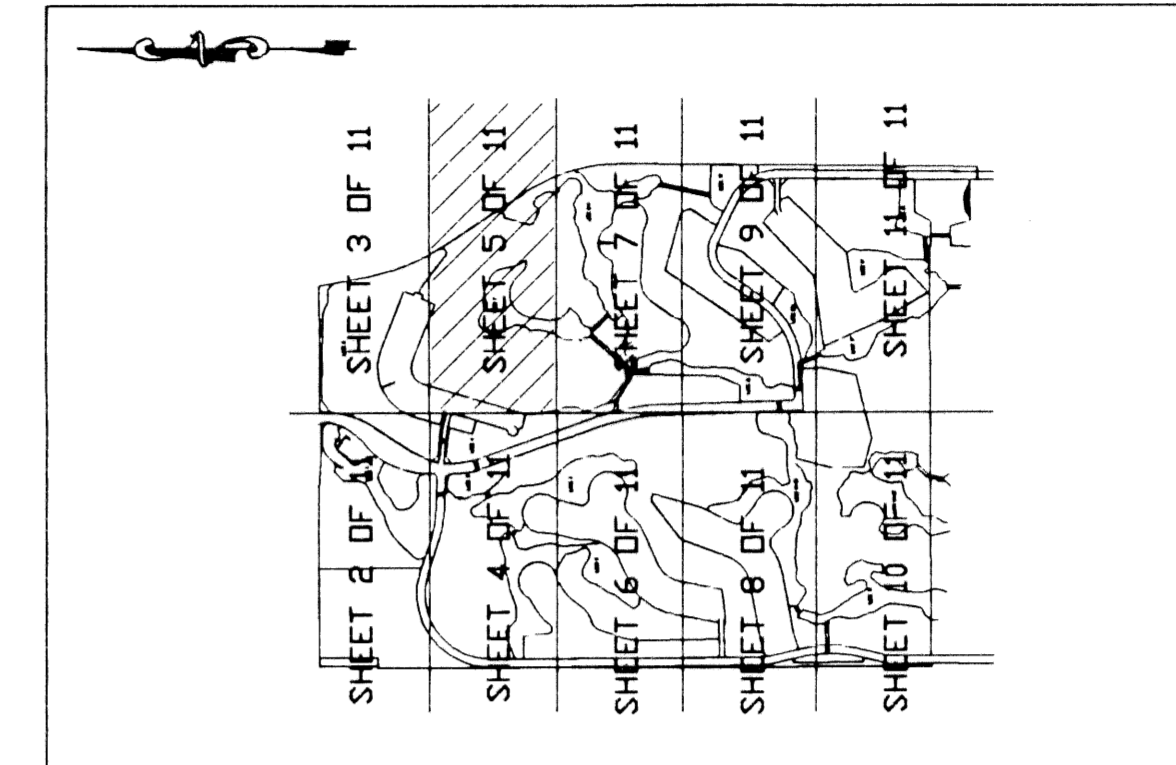


A PLAT OF IBIS GOLF AND COUNTRY CLUB PLAT NO. 14

A PLANNED UNIT DEVELOPMENT
LYING IN SECTIONS 13, 24 AND 25, TOWNSHIP 42 SOUTH, RANGE 41 EAST
CITY OF WEST PALM BEACH, PALM BEACH COUNTY, FLORIDA

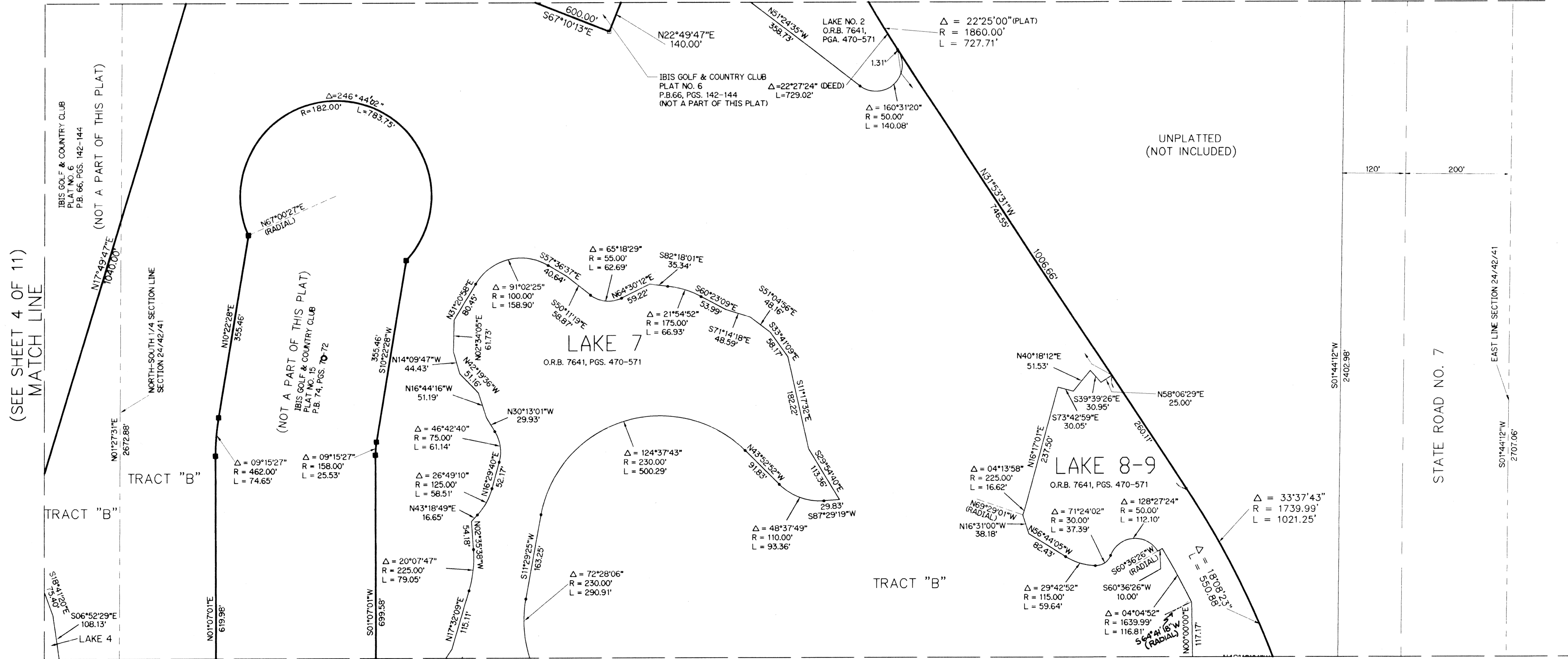
111

KEY MAP
(NOT TO SCALE)



- LEGEND:
- O.R.B. - OFFICIAL RECORD BOOK
 - P.B. - PLAT BOOK
 - PGS. - PAGES
 - W.M.E. - WATER MANAGEMENT EASEMENT
 - - PERMANENT REFERENCE MONUMENT FOUND NO. LB 959
 - - PERMANENT REFERENCE MONUMENT SET NO. LS 4382
 - ⊕ - SECTION CORNER
 - ⊕ - ONE-QUARTER SECTION CORNER

(SEE SHEET 3 OF 11)
MATCH LINE



MATCH LINE
(SEE SHEET 7 OF 11)

SUBDIVISION # Ibis Golf and Country Club Plat No. 14
BOOK 15 PAGE 111
FLOOD ZONE - FLOOD MAP # -
QUAD # - ZONING -
SE - ZIP CODE -
PUD NAME - West Palm Beach
18-24.25/42/41



LINDAHL, BROWNING, FERRARI, & HELLSTROM, INC.
CONSULTING ENGINEERS, PLANNERS & SURVEYORS
210 JUPITER LAKES BLVD. SUITE 201 FT. PIERCE, FL 34950 407-461-2450
BLDG. 5000, SUITE 104 SUITE 201 STUART, FL 34996 407-286-3883
APRITER, FL 33468 WEST PALM BEACH, FL 33409 407-684-3375

5 11
Sheet of